

THE LOCK HOUSE, CAMDEN

Red.

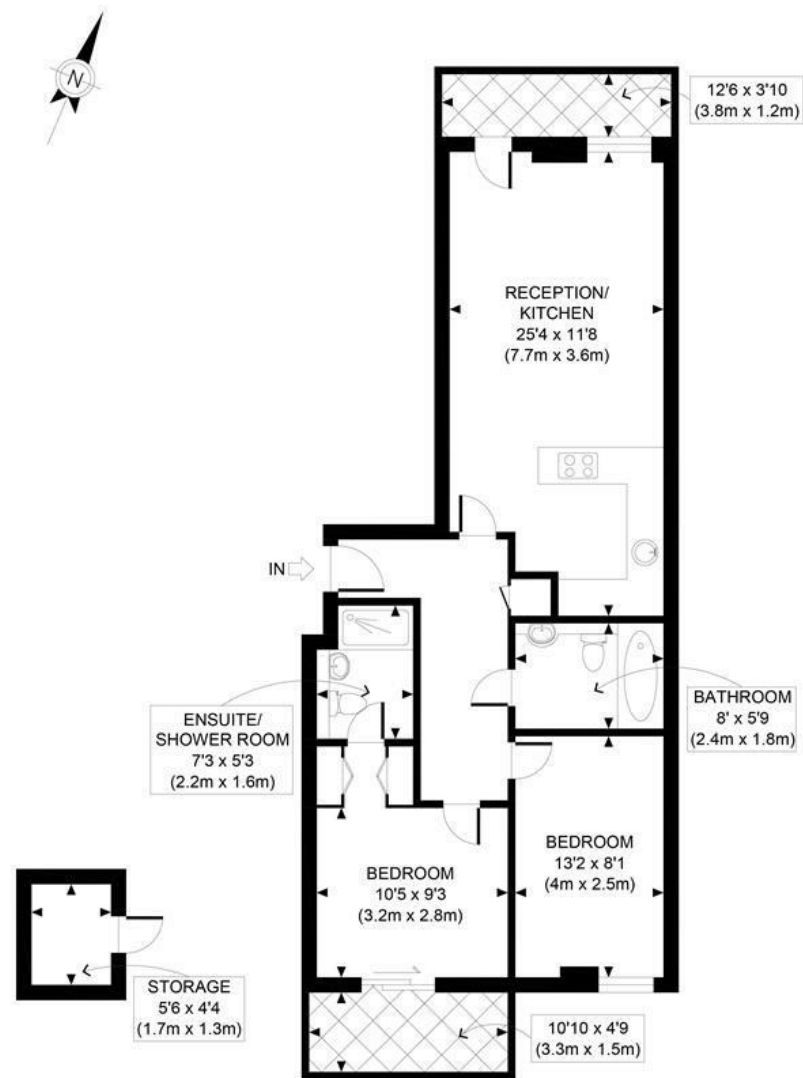


£750,000

A spacious two double bedroom, two bathroom apartment boasting two balconies. This stunning dual aspect property overlooks the Regents Canal and beautifully kept communal gardens with large water feature.

With secure off street parking and storage locker, this apartment is sold with a long lease and no onward chain.

Lock House, Oval Road, enjoys a well presented communal garden and terrace, residents gym, secure cycle parking, 24 hours porter and communal gas central heating system. Well located for Camden Town, Camden Road Overground Stations and many well-connecting bus routes, such as the 274 and C2. Regents Park and Primrose Hill are within 5 minutes walk, there are also many excellent schools, supermarkets, cafés, restaurants, gastropubs, and bars in the local area.



Estimated Gross Internal Area inc storage locker 732 Sq.FT

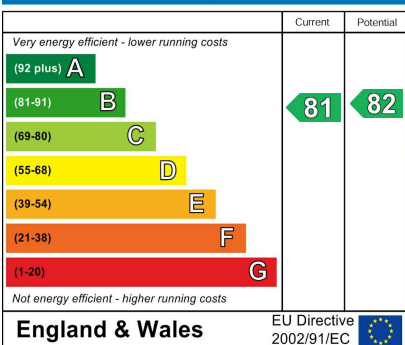
Disclaimer: Floor plan measurements are approximate and are for illustrative purposes only. While we do not doubt the floor plan accuracy and completeness, you or your advisors should conduct a careful, independent investigation of the property in respect of monetary valuation

Red.

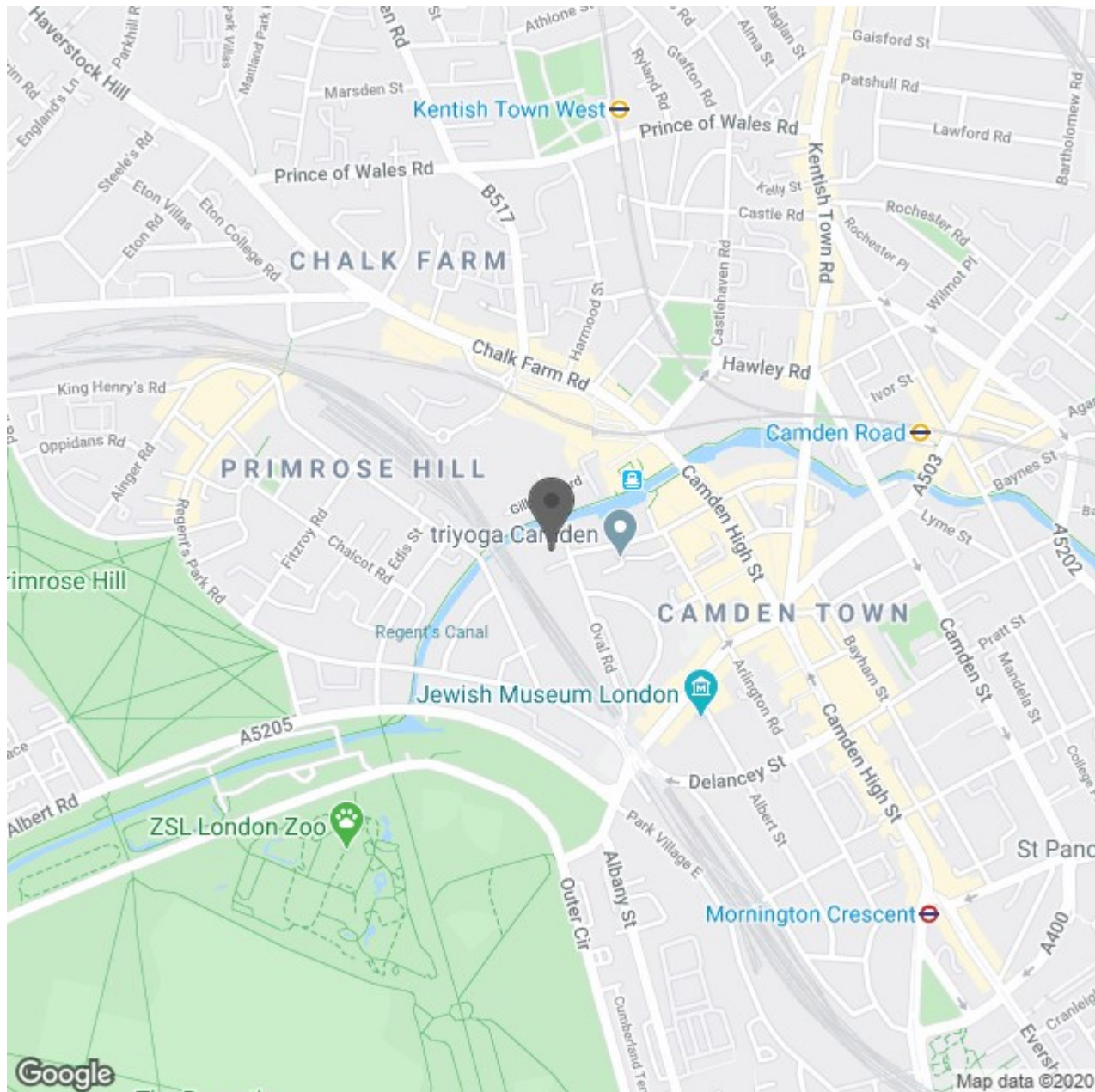
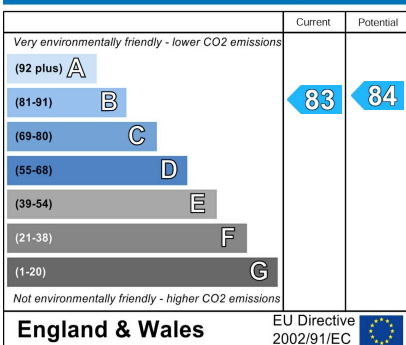
- Two Double Bedrooms
- Dual Aspect
- Secure Storage Locker
- Secure Entry Phone
- 24 Hour Porter
- Two Bathrooms
- Two Balconies
- Allocated Parking Bay
- Residents Gym
- EPC Rating B



Energy Efficiency Rating



Environmental Impact (CO₂) Rating



Red.



Red Property Partnership Ltd
 Company Registered in England & Wales No. 06946290
 Registered Office: 501 Kingsland Road, London, E8 4AU
 VAT Registration Number: 112288536